

T.16N., R.64W., 6th P.M.
Section Corner

RECEIVED
LARAMIE COUNTY
CHEYENNE, WY.

18 | 17
19 | 20

CERTIFIED LAND CORNER RECORDATION

'93 SEP 3 AM 10 29
126088

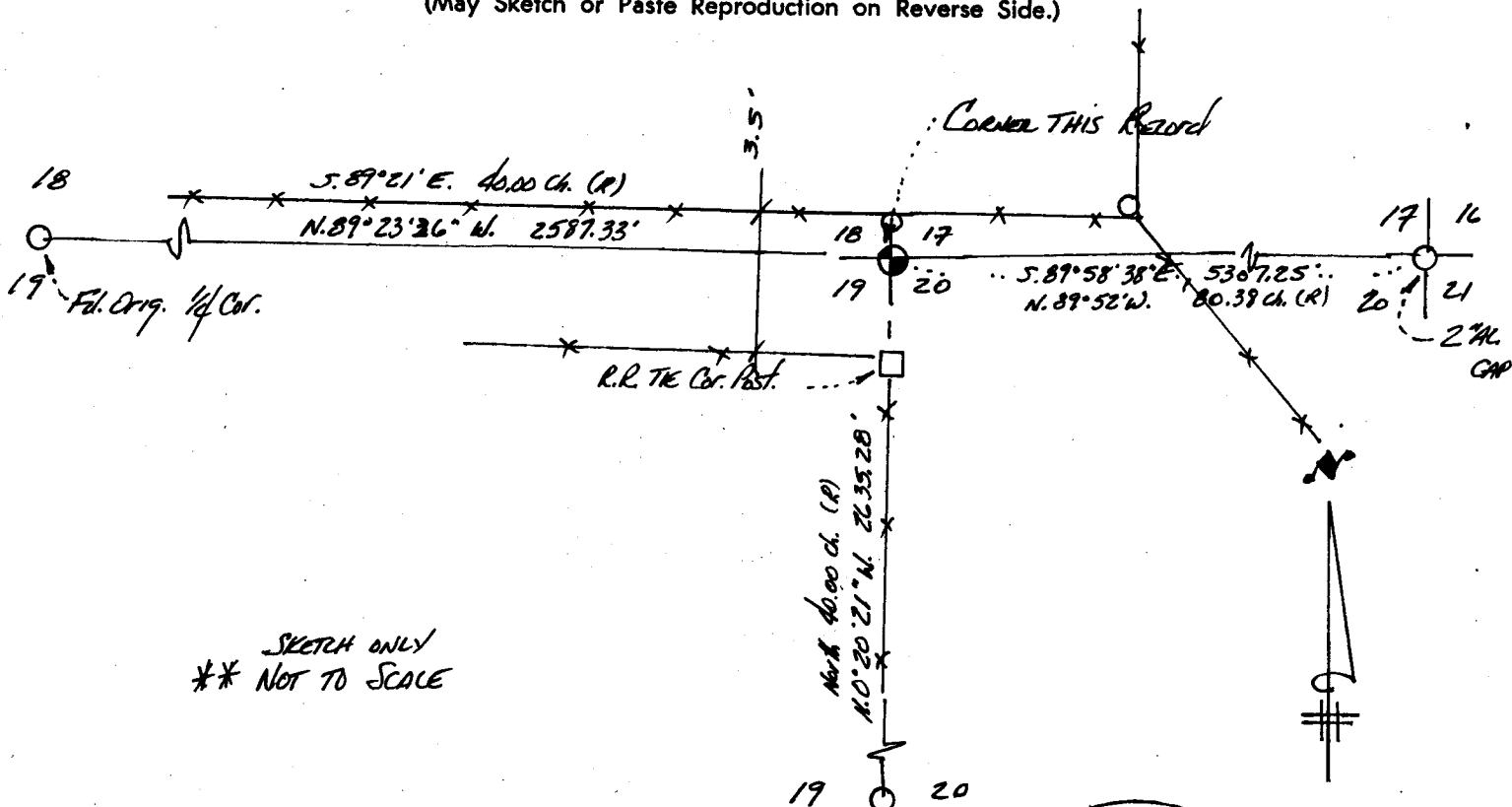
DESCRIPTION OF CORNER EVIDENCE FOUND, AND ORIGINAL RECORD (If known)

Original Survey: Alfred M. Rodgers, U.S. Deputy Surveyor, July, 1871
Record: 80.00 Chains Set a quartz boulder 16 x 6 x 6 for cor to Sections 17 18 19 20
Gently rolling 2d rate land
Found: 12" x 7" x 7" Quartz stone well set and marked with 3 notches on S. face and
5 notches on E. face. Stone was 1' south of fence corner post and 0.1' below
natural ground.

DESCRIPTION OF MONUMENT AND ACCESSORIES ESTABLISHED
TO PERPETUATE THE ORIGINAL LOCATION OF THIS CORNER:

Set: Nothing. Chiseled a cross in the top of stone for exact corner point measured
to.

SKETCH, WITH COURSE AND DISTANCE TO ADJACENT CORNER IF DETERMINED IN THIS SURVEY.
(May Sketch or Paste Reproduction on Reverse Side.)



SKETCH ONLY
** NOT TO SCALE

Basis of Bearings: Solar Observation @ the above corner.

I, Paul A. Reid certify that I have carefully performed and checked the work
done on the diagrammed corner as reported on this recordation form and approve the same.

Signature of Surveyor

2927

Registration No.

STATE OF WYOMING,
Office of Clerk and Recorder,
County of _____

This "corner record" was filed for record on the _____ day of _____, 19____, was noted
on the cross-index plat and is assigned page No. _____, in book No. _____.

18 | 17
19 | 20

County Official			
Cross Index No. N5	T. 16N.	R. 64W.	6th P.M. Mer.
_____	T. _____	R. _____	Mer.
_____	T. _____	R. _____	Mer.
_____	T. _____	R. _____	Mer.
_____	T. _____	R. _____	Mer.
_____	T. _____	R. _____	Mer.
_____	T. _____	R. _____	Mer.